

GERMS?

NOT ON MY WATCH.



According to the World Health Organization:

- Thousands of people die everyday from infections acquired while receiving healthcare
- Hands are the main pathways of germ transmission during healthcare
- Hand hygiene is the most important measure to avoid the transmission of harmful germs and to prevent healthcare-associated infections



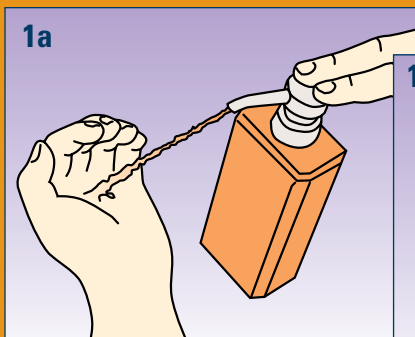
Kimberly-Clark

*Trusted Clinical Solutions**

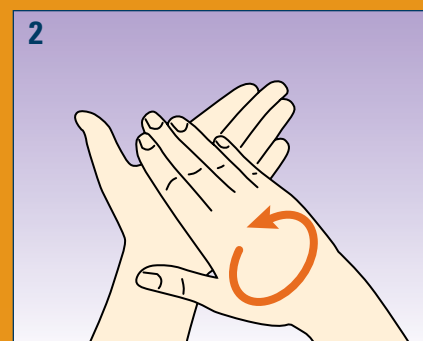
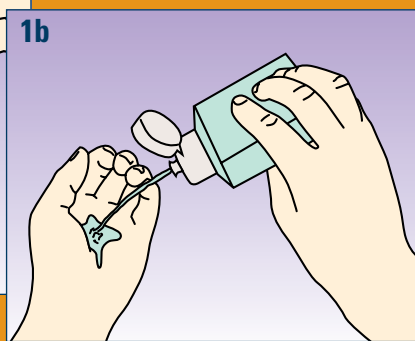
How to handrub

Rub hands for hand hygiene. Wash hands only when visibly soiled.

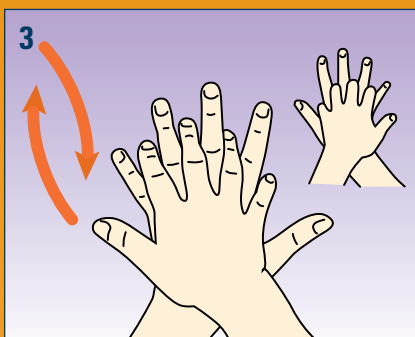
Duration of the entire procedure: 20-30 seconds.



Apply a palmful of the product in a cupped hand and cover all surfaces.



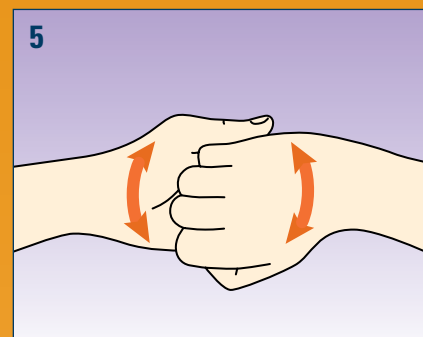
Rub hands palm to palm



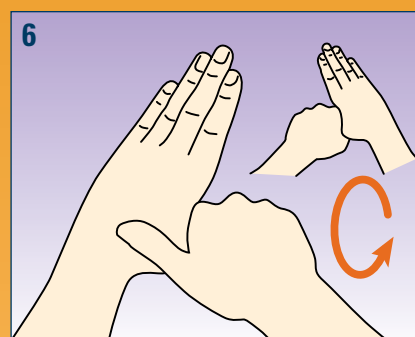
right palm over left dorsum with interlaced fingers and vice versa



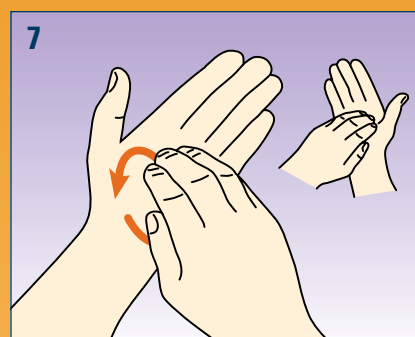
palm to palm with fingers interlaced



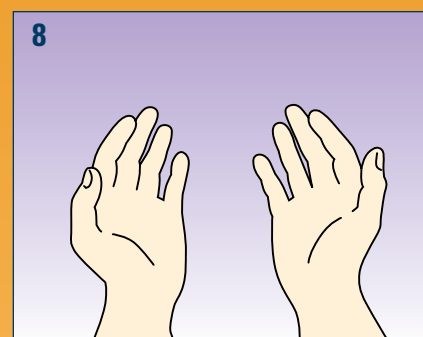
backs of fingers to opposing palms with fingers interlocked



rotational rubbing of left thumb clasped in right palm and vice versa



rotational rubbing, backwards and forwards with clasped fingers of right hand in left palm and vice versa



...once dry, your hands are safe.